



**BILINGUAL
ENGLISH – FRENCH**



SCHOOL

GENERAL INFORMATION

MONTESSORI SCHOOL AT LE VALENTIN

Giving your child the possibility to evolve within the setting of the Montessori School at Le Valentin (from three through to six years of age) means:

Ensuring the evolution of your child in an atmosphere which is caring, warm and respectful of their rhythm and needs.

Giving your child the chance to experiment and immerse his/herself within their own innate learning processes.

Resting assured that the Montessori pedagogy is applied by teachers trained in the method established by Maria Montessori.

Allowing your child to live in a bilingual environment (English/French) on a daily level.

Benefiting from the school environment of Le Valentin rich in its educational quality and experience for two centuries now.

Accessing the services offered by Le Valentin School.

Following on from the Montessori cursus, having access to a school level appropriate for your child. (First or second year primary/ third or fourth year Harnos)

PRESENTATION



Your child is 3-5 years of age; you observe in him/her the desire to do things alone, without the interference of others. The child imitates your daily actions and wishes to do as grown-ups, including writing, reading, counting. This is healthy and natural.

The child, in order to build his/her future, needs interaction with other children as well as the chance to benefit from an environment allowing the opportunity to learn through experiences and experiments with materials adequate to his needs, all within a caring environment.

FOR WHOM?

The school is open to the children of parents wishing to offer a Montessori education, as developed by Maria Montessori, in a bilingual setting that is one of total immersion and in surroundings that respect the capabilities and needs of the child. We create an atmosphere that values tolerance, acceptance and encouragement so as to enable the well-being which is inherent to a harmonious development and allows the child an optimal learning process.

OUR OBJECTIVE

Provide each child in our school with the necessary tools to develop his/her whole potential and allow each one to flourish humanely.



MONTESSORI EDUCATION

« To learn, a child must feel accepted, loved, secure and act within an environment that is encouraging, nourishing and supportive. »

Maria Montessori.

Your child will evolve in a context which is designed to develop all the positive, humane characteristics inherent to his/her age group.

The education we provide specializes in giving children the tools with which they can practise and experiment themselves, refining their skills until satisfied with the accomplished task. Within this dynamic, the reward becomes the satisfaction of the goal being fulfilled by themselves.

Through interacting with the materials provided, disposing of freedom within the time frame to explore and due to the atmosphere created, the child will develop his/her faculties to reason and find a natural attitude of auto correction and improvement.

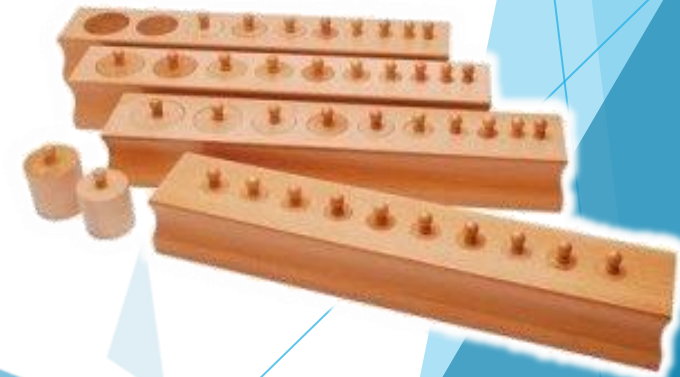
To assist the child to let go of negative behaviour we guide him/her towards activities which enhance focus and allow the constructive elements of his/her personality to be highlighted.



PROGRAMME

We can distinguish five areas of knowledge introduced to your child and around which gravitate the sensitive periods:

1. **«Practical life»**, so that your child becomes autonomous in everyday activities. These practical activities are the foundation upon which the child acquires his/her social skills, the command of motor skills and the capacity to concentrate. These three elements are fundamental to all the activities and work within the classroom.
2. **Sensorial development material**, for an optimal discovery of the surrounding world. The child's intellectual faculties will be enhanced through the refining and clarification of the senses, in particular through the verbal acknowledgement of his/her sensorial perception.
3. **Language**. In order to provide the tools which, allow the child to express his/her thoughts and to communicate, sharing and listening to the ideas and opinions of others. The basics of reading and writing can be grasped along with a sensorial approach to grammar. The bilingual context provides the opportunity for the child to communicate in a second language.
4. **Mathematics** are used as a means of elementary culture so that your child may understand better the surrounding social and physical world. There is the discovery of the decimal system, linear counting, and the four basic operations of elementary arithmetic with concrete didactic material which is age appropriate.
5. **General culture**, material to provide answers to your child's questions concerning the world and stimulate his/her curiosity. This material includes music, zoology, botany, geography, and some scientific experiments.



TYPICAL MONTESSORI DAY AT THE VALENTIN - SCHEDULE

- 7:30 am – 8:30 am** Possible to enrol your child at the childcare centre of le Valentin
- 8:30 am -11:30 am** Montessori Classes
- 11:30 am -12:30 am** Lunchtime. The children eat together with children from the other classes
- 12:30 pm -1:20 pm** Recreational activities shared with children from other classes
- 1:20 pm – 3:00 pm** Montessori Classes
- 3:00 pm** End of the school day
- 3:00 pm – 6:00 pm** Possible to enrol your child at the childcare centre of le Valentin



SCHEDULE



EXTRA CURRICULAR ACTIVITIES

We collaborate closely with le Valentin School which enables you to benefit from all their extracurricular activities.

CHILDCARE:

- In the morning 7:30 am – 8:30 am, every day of the week.
- Midday with lunch included, between 11:30 am and 1:20 pm, every day except Wednesday.
- In the afternoon, 3:00 pm – 6:00 pm, every day except Wednesday.
- Wednesdays: 11:30 am to 6:00 pm.
- February and Easter holidays.
- The week preceding the summer holidays and the week preceding the start of the school year in September.

FURTHERMORE:

- A school bus service in the mornings and at the end of the school day.
- As of 4 years of age you can enrol your child in various extracurricular activities.



ANNUAL FEES

ANNUAL FEES

Application fees	350.-
Administrative fees	322.-
Fulltime attendance	15'000.– per year
Morning attendance	12'000.– per year
Afternoon attendance	75.- (per afternoon on a monthly basis)

OPTIONS

Upon enrolment and for minimum one term (fee per year)

Lunchtime meal 1'900.- (except Wednesday)

Occasional meal (voucher) 14.-

Childcare 3'250.- (all-inclusive fee)

Request for an hourly fee can be made to the administration



PLEASE NOTE

1. Administrative costs and learning material: this amount covers the fees of the pedagogical material (photocopies, drawing paper, etc.) This amount does not cover books, folders, and notebooks.
2. The payment is monthly with no increase, over a period of 10 months, to be paid on the 1st of each month.
3. When paid per annum the school fee grants from a 3% discount if paid within 30 days of receiving the invoice.
4. All modifications and adaptations of the fees are reserved.
5. The cost of the meals is a flat rate, no matter the number of meals taken.

ENROLLMENT

GENERAL CONDITIONS

The Montessori school cycle which we offer is for a duration of three years. The child starts at 3 years of age and finishes at 6 years of age.

First year:

The child may be enrolled for mornings only and must attend at least four successive mornings.

Second year:

Your child gradually attends afternoons until they eventually transition into full-time scolarity.

Third year:

The children participate on a full-time basis, attending class in the mornings and afternoons.

ADMISSION PROCESS

Firstly, a meeting is arranged with the educational team so that you may be introduced to the school, speak further of the methodology and ask any questions. The director will then discuss administrative issues with you.

Before enrolment, your child is welcomed into a class for a one-week trial period.

ENROLLMENT PROCEDURE

An enrolment is possible throughout the whole school year. A place can be confirmed upon reception of the enrolment form completed and signed by one of the parents or the child's legal authority. The following elements must accompany the enrolment form:

- School report from previous years
- 2 passport photos
- Liability insurance certificate
- Health and accident insurance certificate



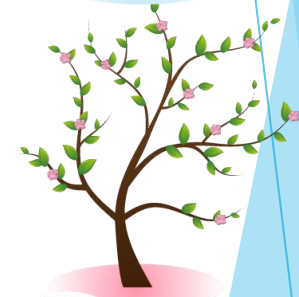


MONTESSORI
LE
VALENTINI

A teal silhouette of a child in profile, holding a rose. The child is facing right. The rose is held in the child's right hand.

SCHOOL CALENDAR 2021-2022

	CLASSES END	CLASSES RESUME
Start of the new school year		Lundi 30/08/2021 à 09h00
HOLIDAYS AND PUBLIC HOLIDAYS		
Federal Fast	Friday 17/09/2021 at 3:00 pm	Tuesday 21/09/2021 at 8:30 am
Autumn holidays	Friday 15/10/2021 at 3:00 pm	Monday 01/11/2021 at 8:30 am
Christmas holidays	Thursday 23/12/2021 at 3:00 pm	Monday 10/01/2022 at 8:30 am
February holidays	Friday 18/02/2022 at 3:00 pm	Monday 28/02/2022 at 8:30 am
Easter holidays	Thursday 14/04/2022 at 3:00 pm	Monday 02/05/2022 at 8:30 am
Ascension	Wednesday 25/05/2022 at 11:30 am	Monday 30/05/2022 at 8:30 am
Pentecost	Friday 03/06/2022 at 3:00 pm	Tuesday 07/06/2022 at 8:30 am
Other dates to be noted		
Christmas celebration		
End of school year	Thursday 23/06/2022 noon	





www.montessori-levalentin.ch
montessori@levalentin.ch
Rue du Valentin 7 – 1004 Lausanne
021 312 44 33



- 🌹 Montessori Pedagogy for children from 3-6 years of age
- 🌹 Total English-French immersion
- 🌹 Childcare from 7:30 am to 6:00 pm
- 🌹 Bus service available under registration
- 🌹 The transition from the Montessori branch embraces an adapted integration into the Valentin School system